

Frýdštejn, Bezdečín, Böhmen / Bohemia



© OpenStreetMap-Mitwirkende

Im Steinbruch bei Frýdštejn, exakter wäre die Fundortbezeichnung Bezdečín, wird seit den 1960er Jahren nördlich der Straße von Frýdštejn nach Bezdečín Basalt abgebaut. Während vor Jahren ein angemeldeter Zutritt möglich war, ist das Werk heute videoüberwacht und der Zutritt verboten. Sammler betreten in letzter Zeit manchmal den Steinbruch illegal über das Dorf Bezdečín. Die Achate aus der anfänglich abgebauten und gut erkennbaren Verwitterungszone waren oft bis zu dezimetergroß, aber im Ganzen meist sehr rissig. Durch Kascholong (Übergangsform von Opal zu Chalcedon) sind die Achate überwiegend weißlich bis beigefarben. Calcit füllt oft ganze Mandeln aus. In einer tieferliegenden Formation besonders harten Basalts konnten farbenprächtige und weitestgehend rissfreie Achate gefunden werden. Relativ selten sind wie in vielen anderen Fundorten des Böhmisches Riesengebirgsvorlandes Drusen mit den phanerokristallinen Farbvarietäten des Quarzes, Calcit und Goethit.

In the Frýdštejn quarry, more accurately called Bezdečín, basalt has been mined north of the road from Frýdštejn to Bezdečín since the 1960s. While registered access was possible years ago, the quarry is now under video surveillance and access is prohibited. Recently, collectors have been entering the quarry illegally via the village of Bezdečín. The agates from the initially quarried and easily recognizable weathering zone were often found in sizes up to 10 cm, but usually heavily fractured. Agates are predominantly whitish to beige-colored due to the presence of the “kascholong” variety (transitional form from opal to chalcedony; “mother of pearl opal”) variety. Calcite often fills entire nodules. In a deeper layer of particularly hard basalt, colorful and largely fracture-free agates were found. Druses with the phanero-crystalline color varieties of quartz, calcite and goethite are relatively rare, as in many other locations in the Bohemian foothills of the Giant Mountains.



**Steinbruch Frýdštejn / Frýdštejn Quarry.
Dieter Schwarz photos.**



Steinbruch Frýdštejn / Frýdštejn Quarry. Martin Dörge photos.



5.3 cm. Dieter Schwarz collection & photo.



8.5 cm. Dieter Schwarz collection & photo.



8.6 cm. Dieter Schwarz collection & photo.



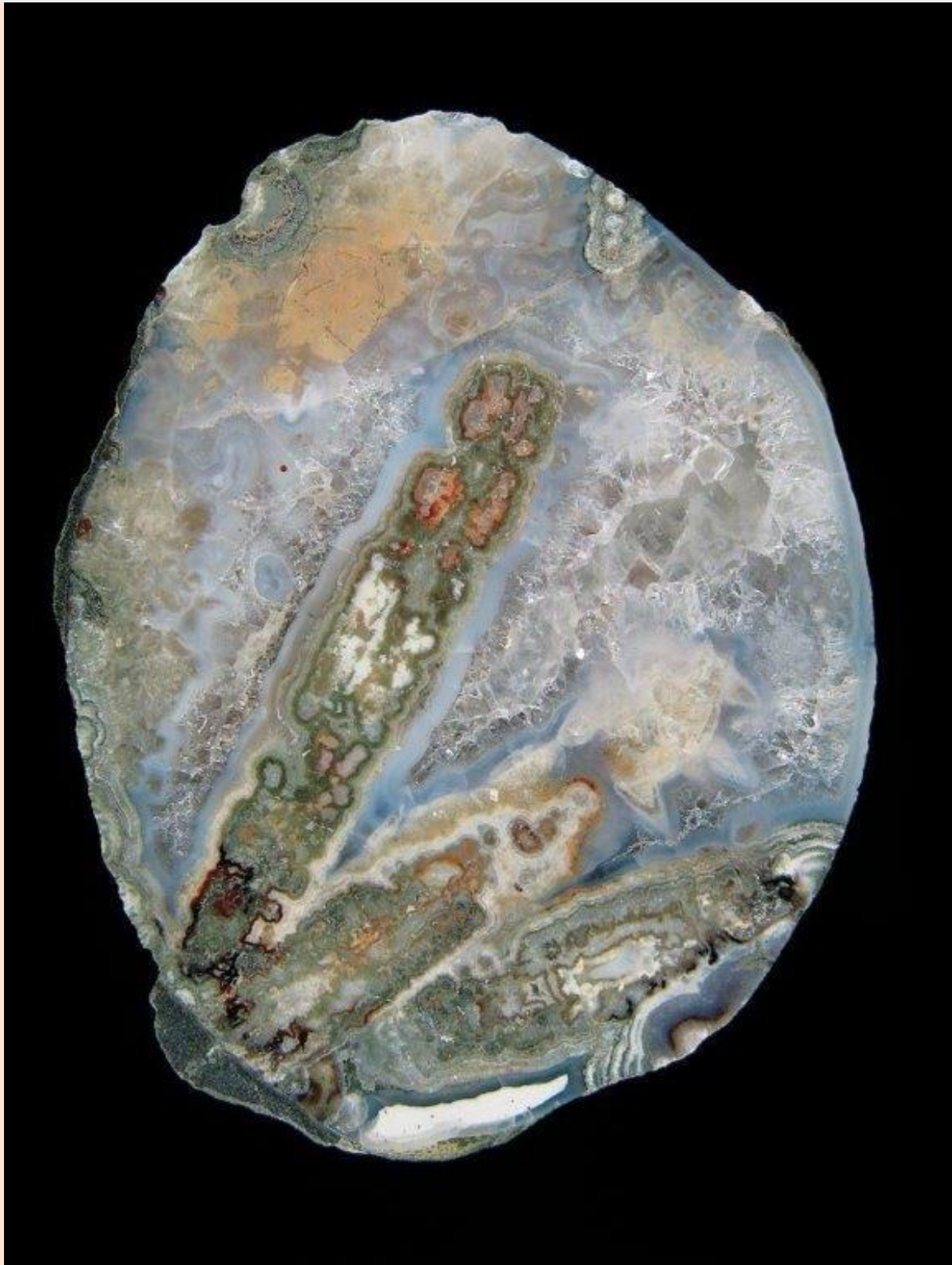
3.4 cm. Ex Gerhart Krammer (†) collection & photo.



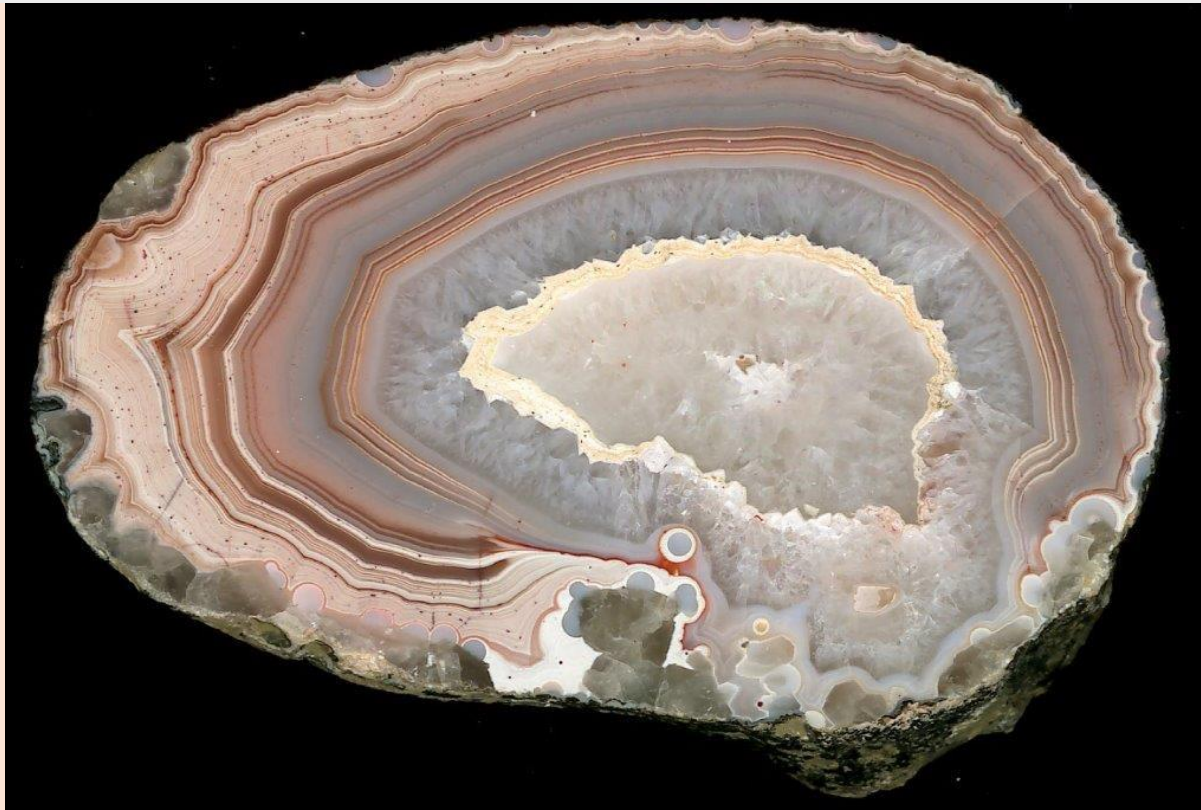
Amethyst-Zentrum / Amethyst center. 4.8 cm. Ex Gerhart Krammer (†) collection & photo.



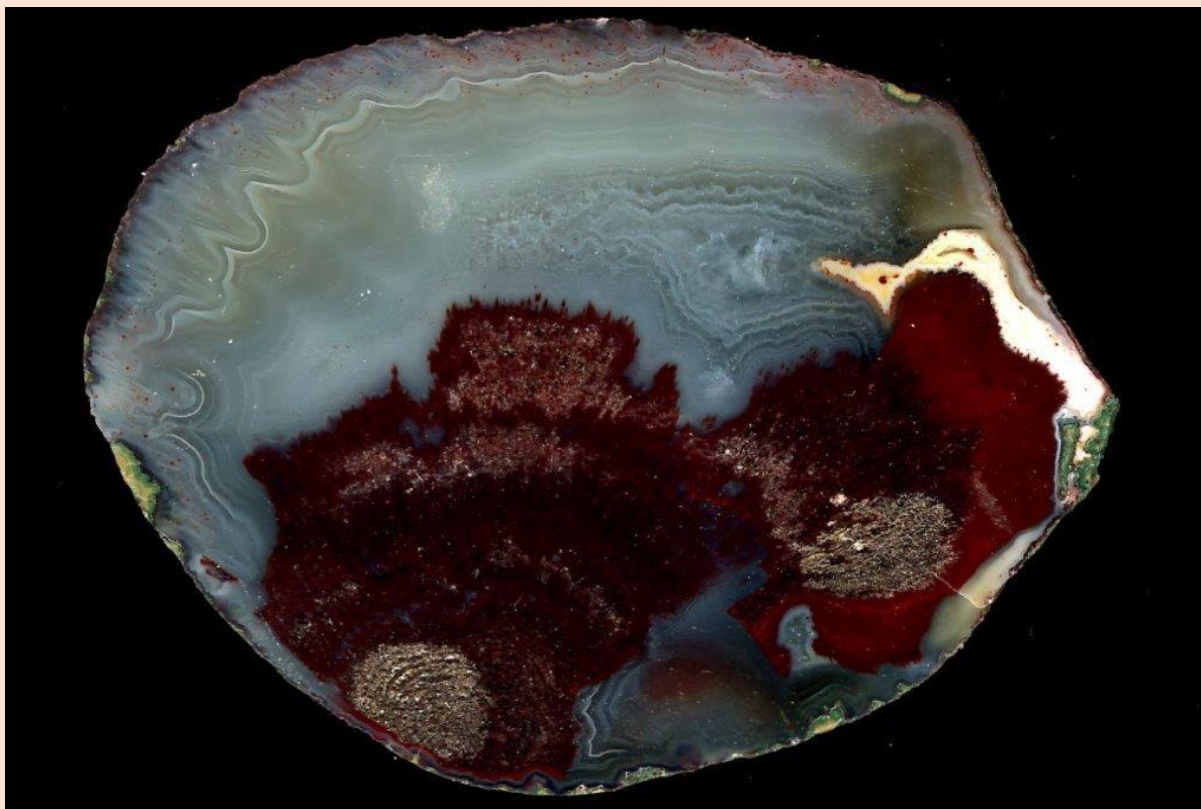
6.2 cm. Ex Gerhart Krammer (†) collection & photo.



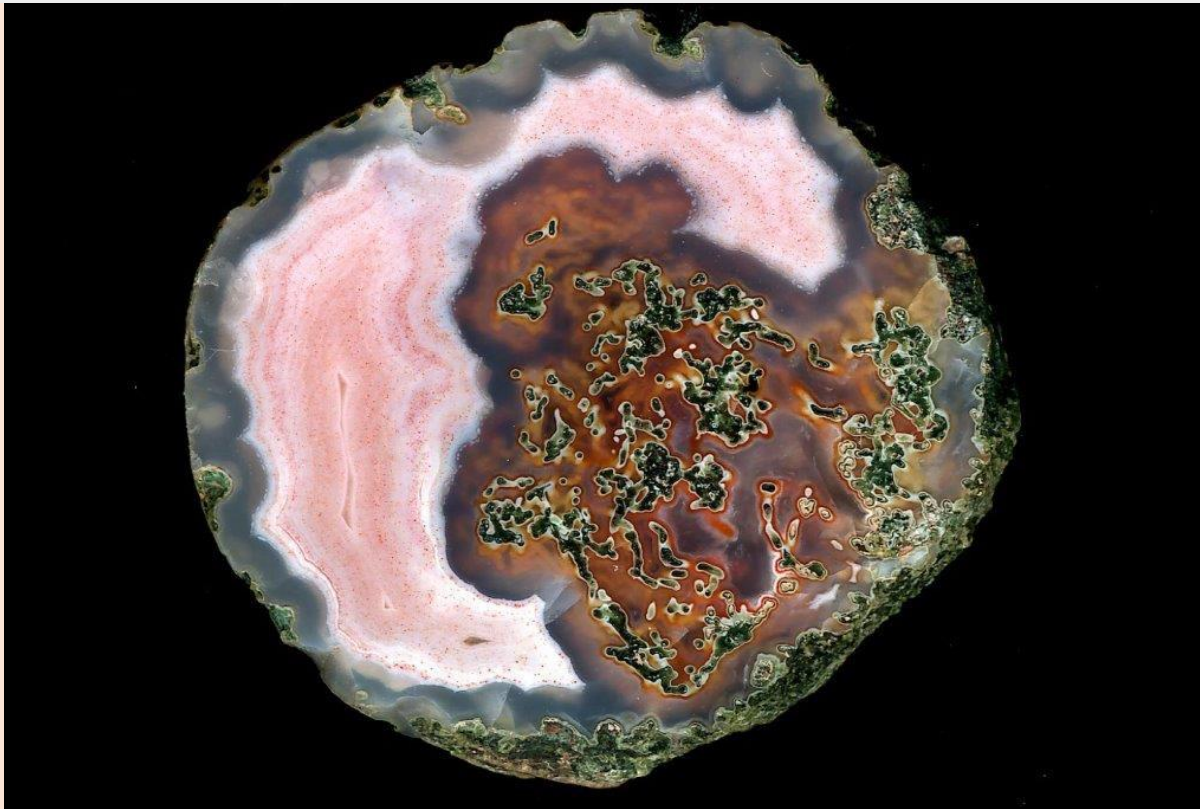
**Pseudomorphosen / Pseudomorphs. 5.1 cm.
Dieter Schwarz collection & photo.**



4.4 cm. Ex Gerhart Krammer (†) collection & photo.



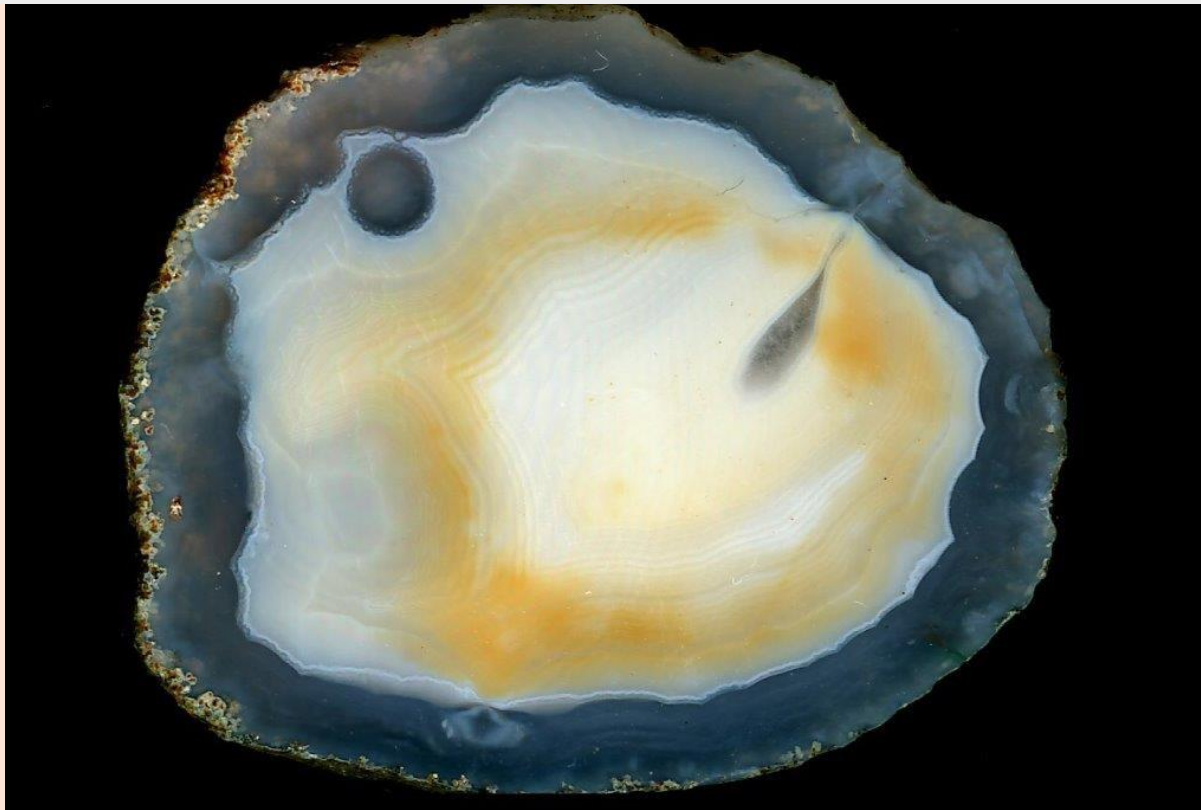
4.4 cm. Ex Gerhart Krammer (†) collection & photo.



Röhrenstrukturen / Tube structures. 3.5 cm. Ex Gerhart Krammer (†) collection & photo.



Moosachatstrukturen / Moss agate structures. 5 cm. Dieter Schwarz collection & photo.



3.5 cm. Ex Gerhart Krammer (†) collection & photo.



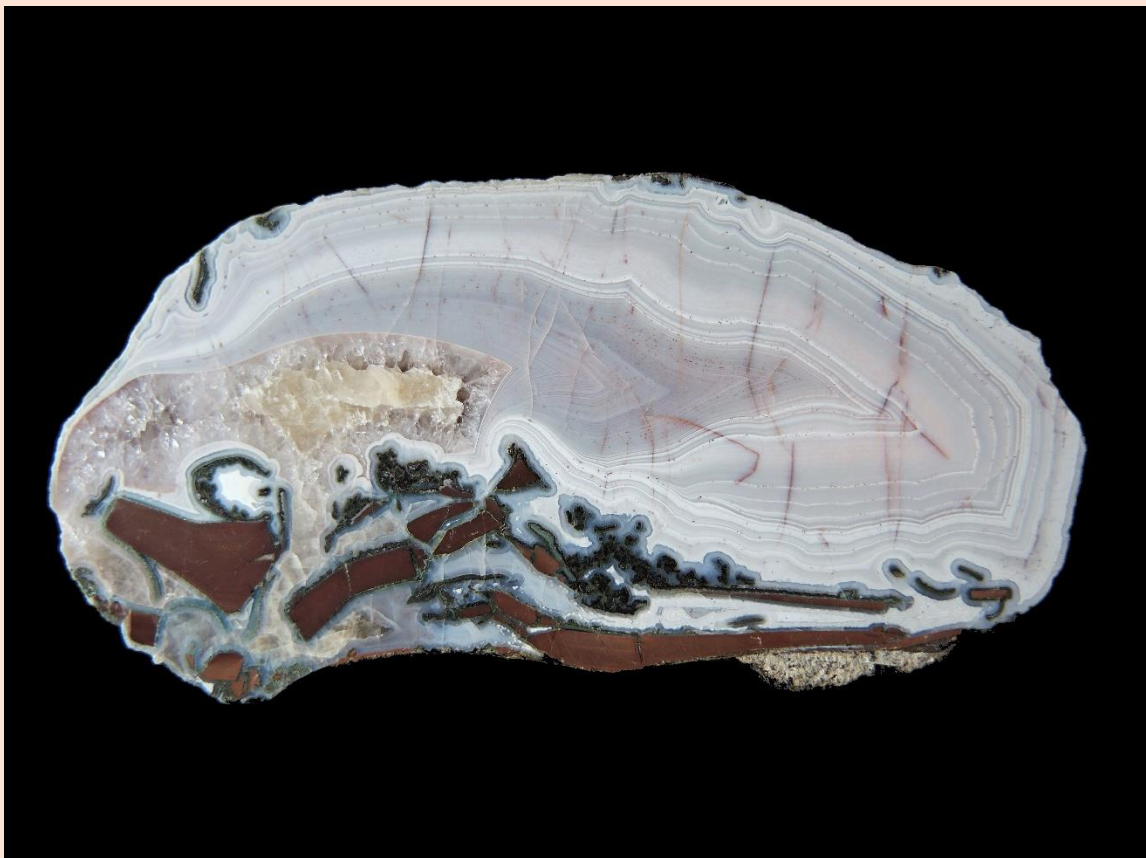
3.2 cm. Ex Gerhart Krammer (†) collection & photo.



**Geode mit Achat, Amethyst- und Calcitkristallen /
Geode with agate, amethyst and calcite crystals.
7.3 cm. Dieter Schwarz collection & photo.**



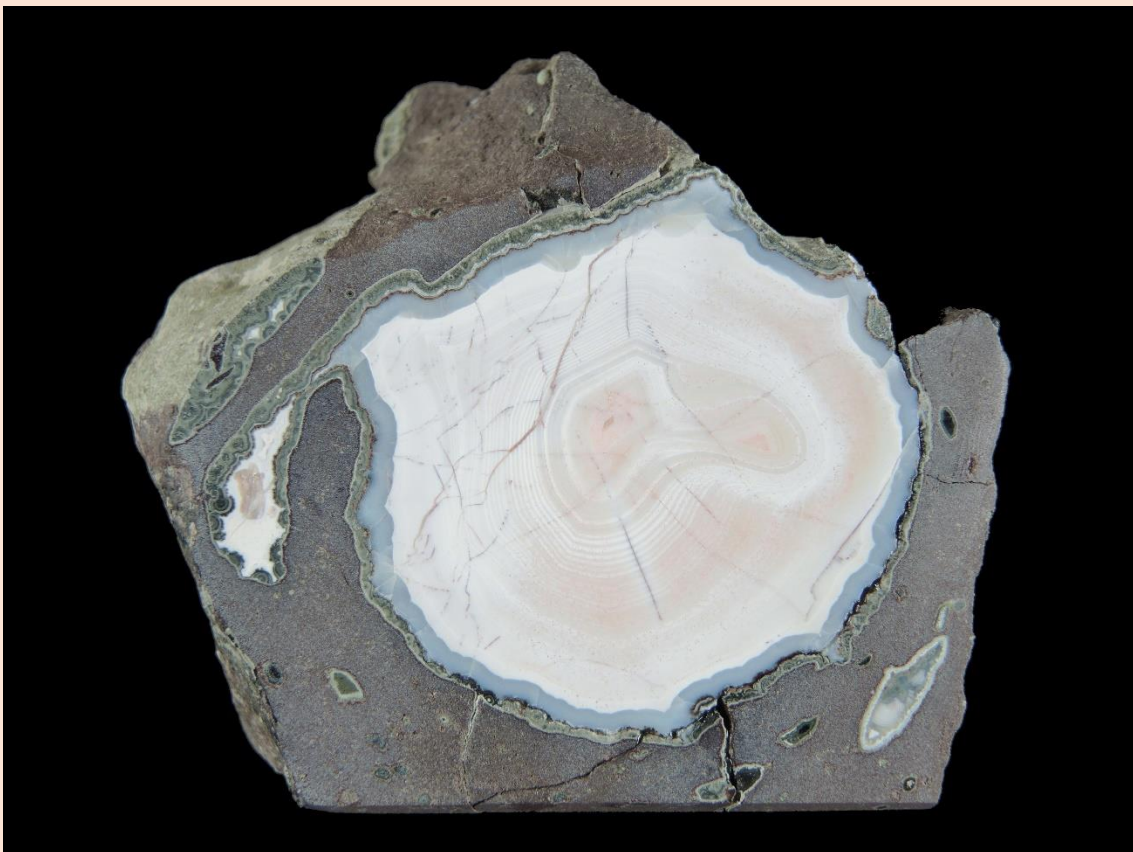
4.3 cm. Helmut Schumann collection & photo.



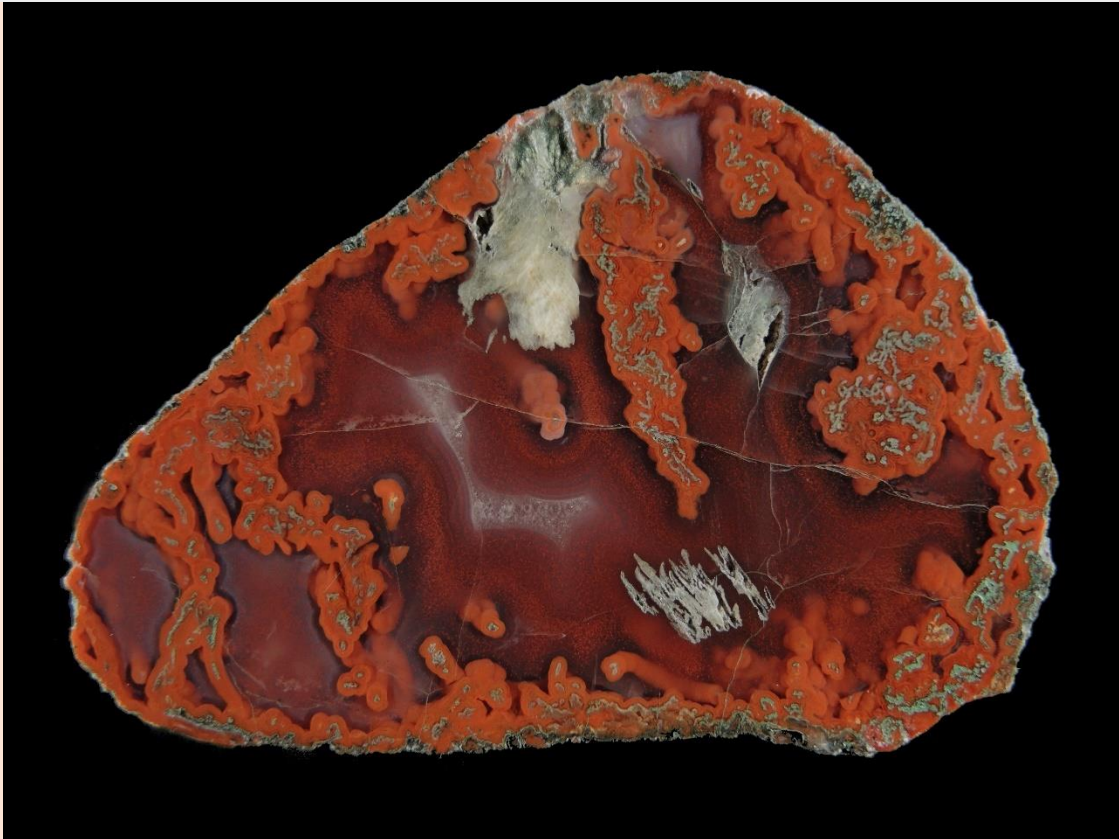
7 cm. Helmut Schumann collection & photo.



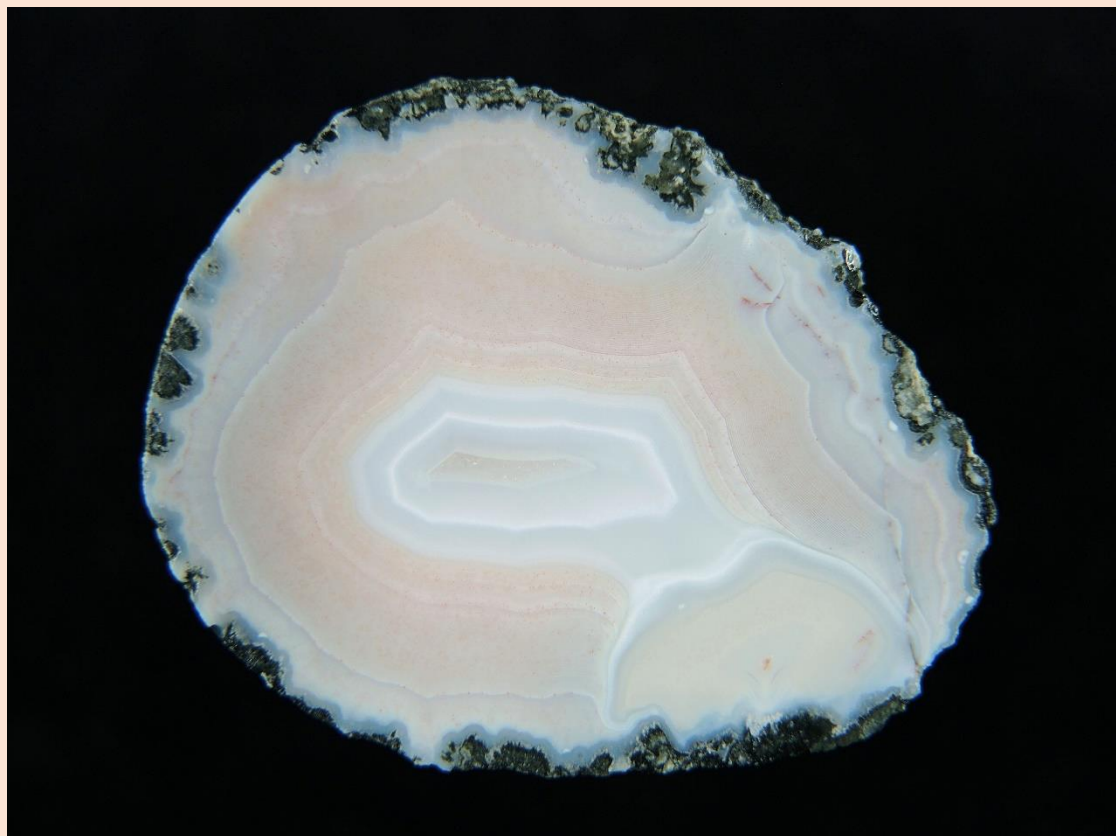
9 cm. Helmut Schumann collection & photo.



7 cm. Helmut Schumann collection & photo.



9 cm. Helmut Schumann collection & photo.



4.4 cm. Helmut Schumann collection & photo.



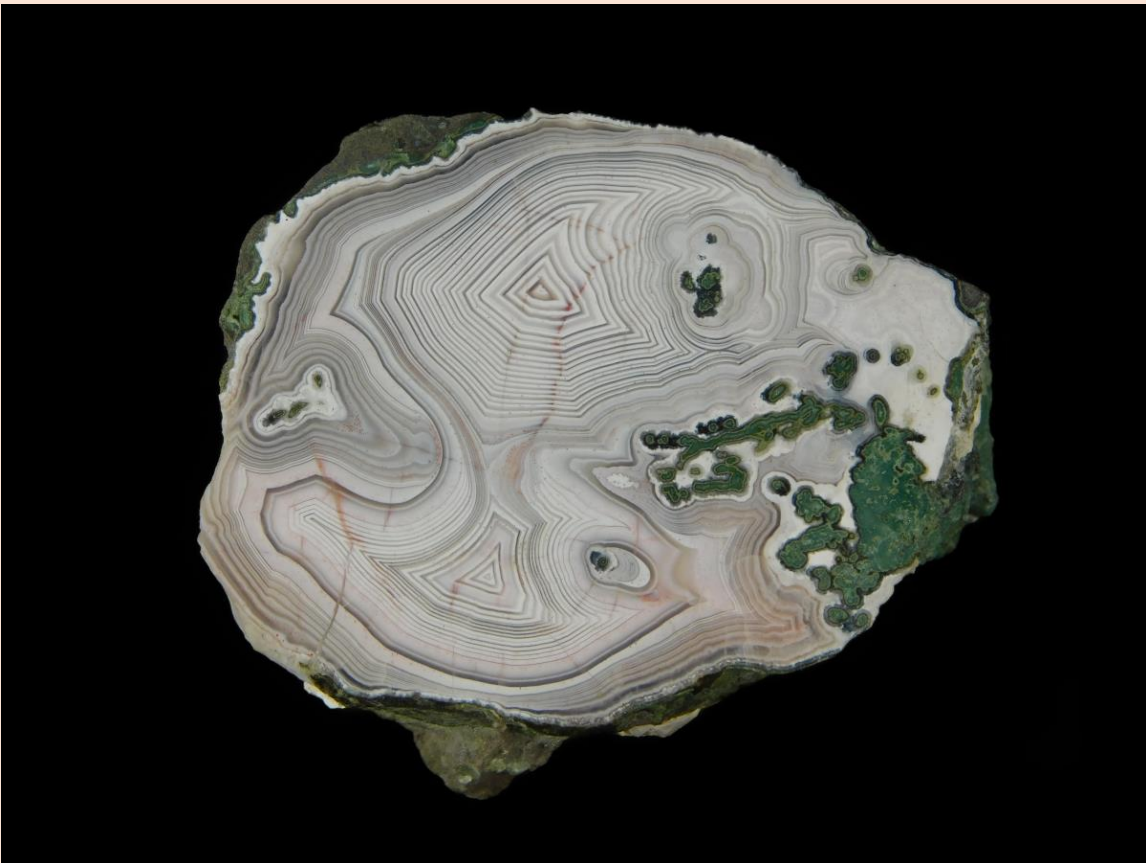
6.2 cm. Klaus Stubenrauch collection & photo.



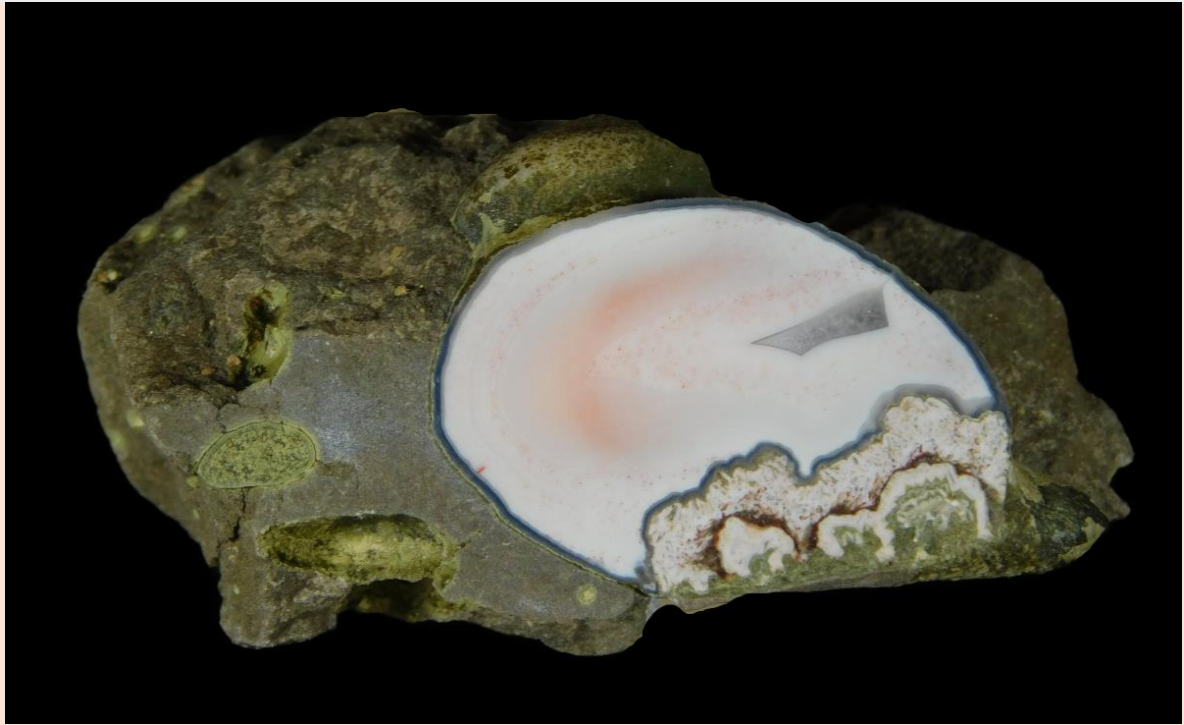
4.3 cm. Klaus Stubenrauch collection & photo.



Große Sphärolithe / Big spherulites. 3.5 cm. Johann Zenz collection & photo.



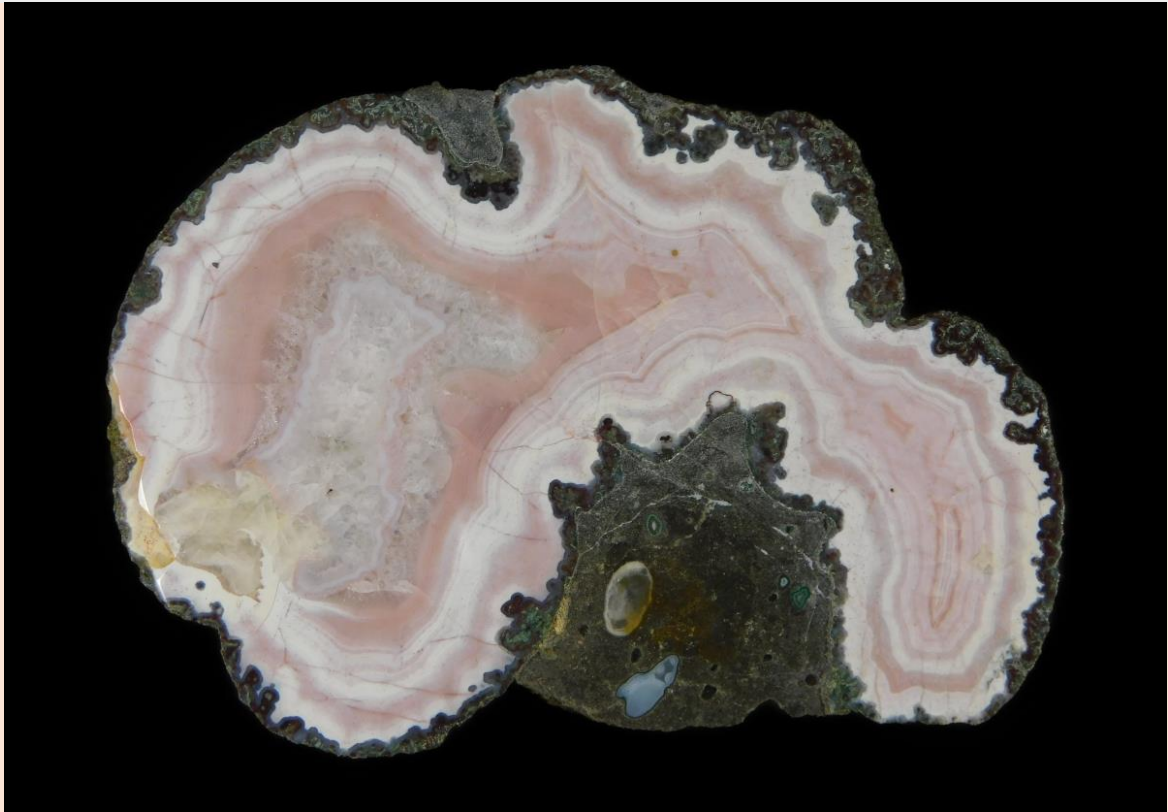
7.5 cm. Johann Zenz collection & photo.



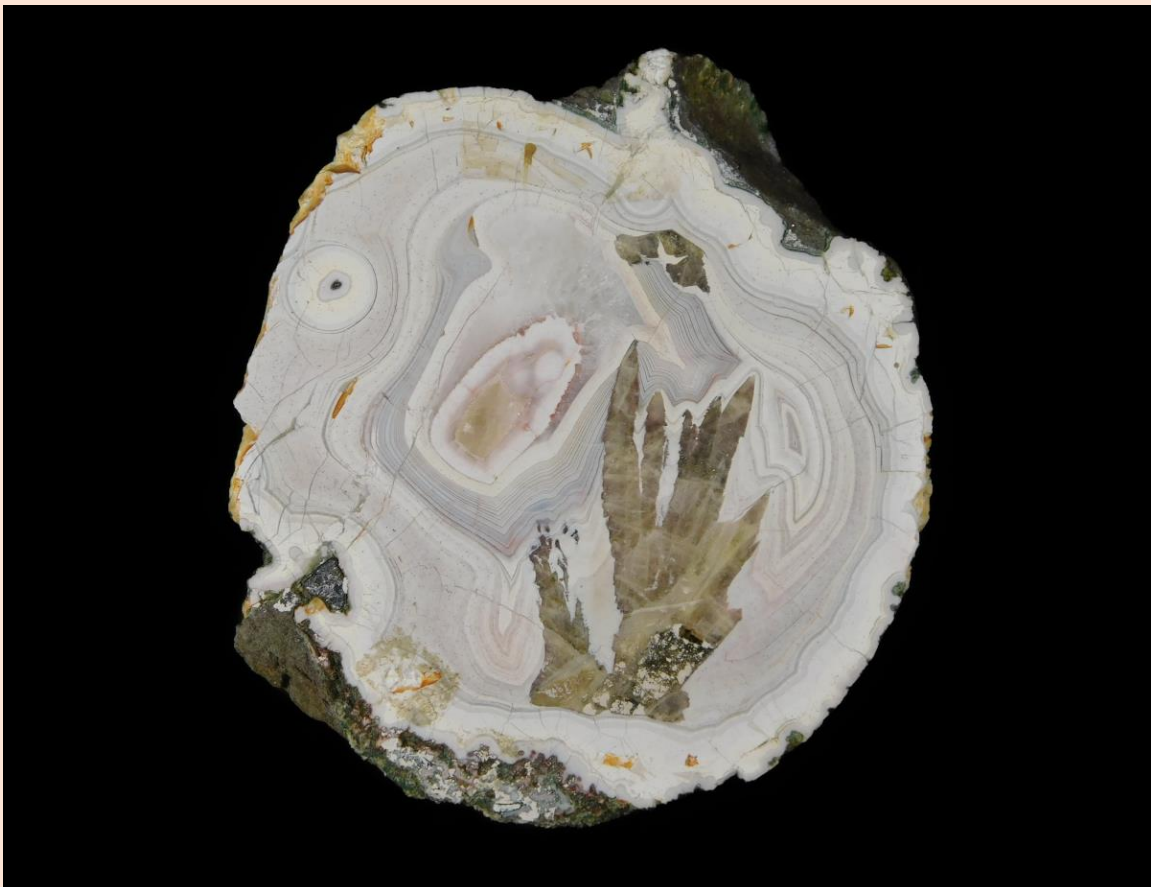
Achat im Muttergestein / Agate in host rock. 8 cm. Johann Zenz collection & photo.



Calciteinschlüsse / Calcite inclusions. 8.5 cm. Johann Zenz collection & photo.



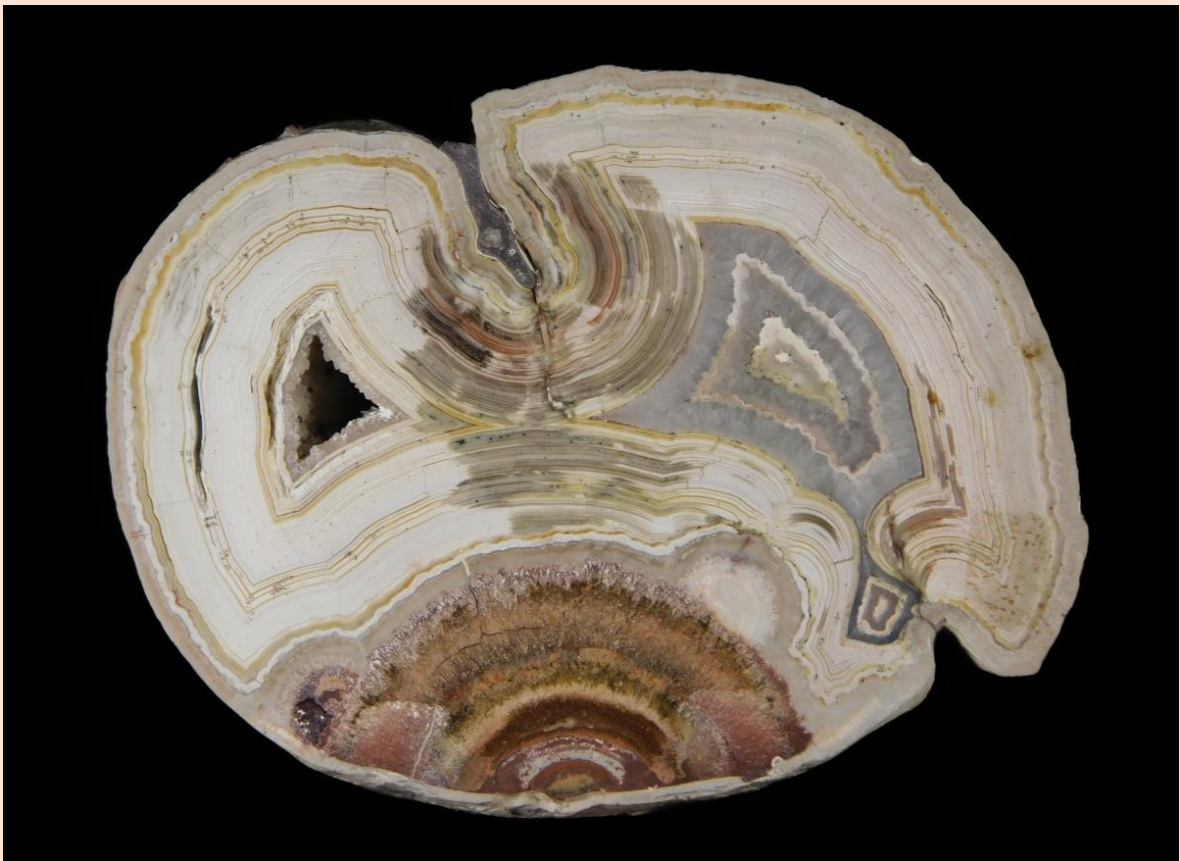
11 cm. Johann Zenz collection & photo.



Calcitkristalleinschlüsse / Calcite crystals inclusions. 9.5 cm. Johann Zenz collection & photo.



9.8 cm. Klaus Stubenrauch collection & photo.



11 cm. Johann Zenz collection & photo.



10 cm. Johann Zenz collection & photo.



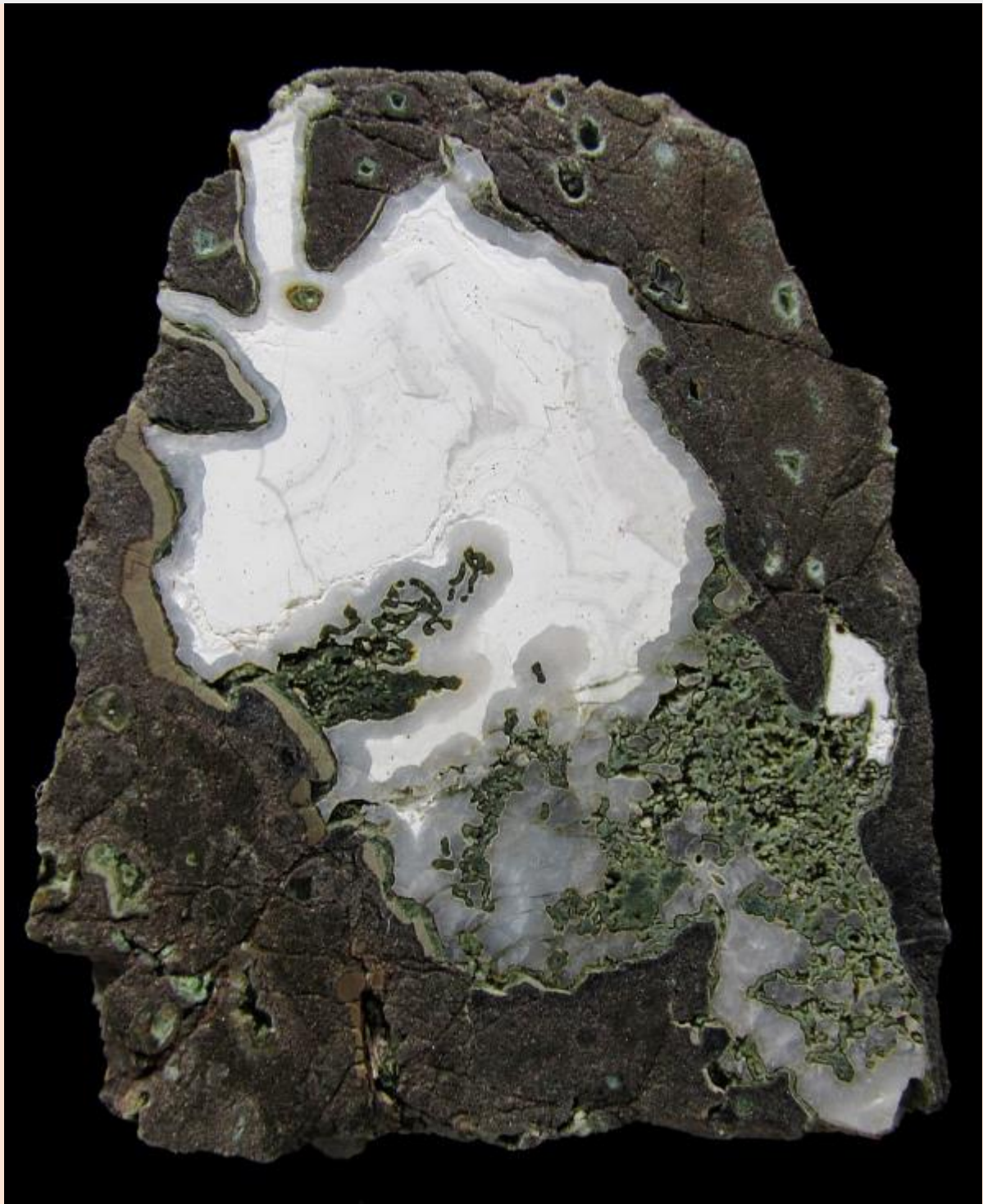
22 cm. Klaus Stubenrauch collection & photo.



7.3 cm. Klaus Stubenrauch collection & photo.



Detail von Bild oben / Detail from above. 3.6 cm. Klaus Stubenrauch collection & photo.



5.1 cm. Klaus Stubenrauch collection & photo.

Literatur / Bibliography

Autorenkollektiv/Author Collective (2010): České a Moravské Acháty. GRANIT, Praha.

BEER, M. (1992): Achate und andere Mineralien aus den nordost-böhmischen Melaphyren. Mineralien Welt 4/1992. 47-51.

NEVRKLA, A. (2012): Vyrobeno přírodou. České Acháty z Podkrkonoší. Eigenverlag/ Self-published.

TOMÈS, Z. (2001): Drahé Kameny Podkrkonoší. GRANIT, Praha.

ZENZ, J. (2009): Achate / Agates II. Bode Verlag, Salzhemmendorf. 309, 316-321.

ZENZ, J. (2018): Achatstrukturen in Nicht-Chalcedon-Materialien. Mineralien Welt 4/2018. 88-96.